

**Moonlight table**

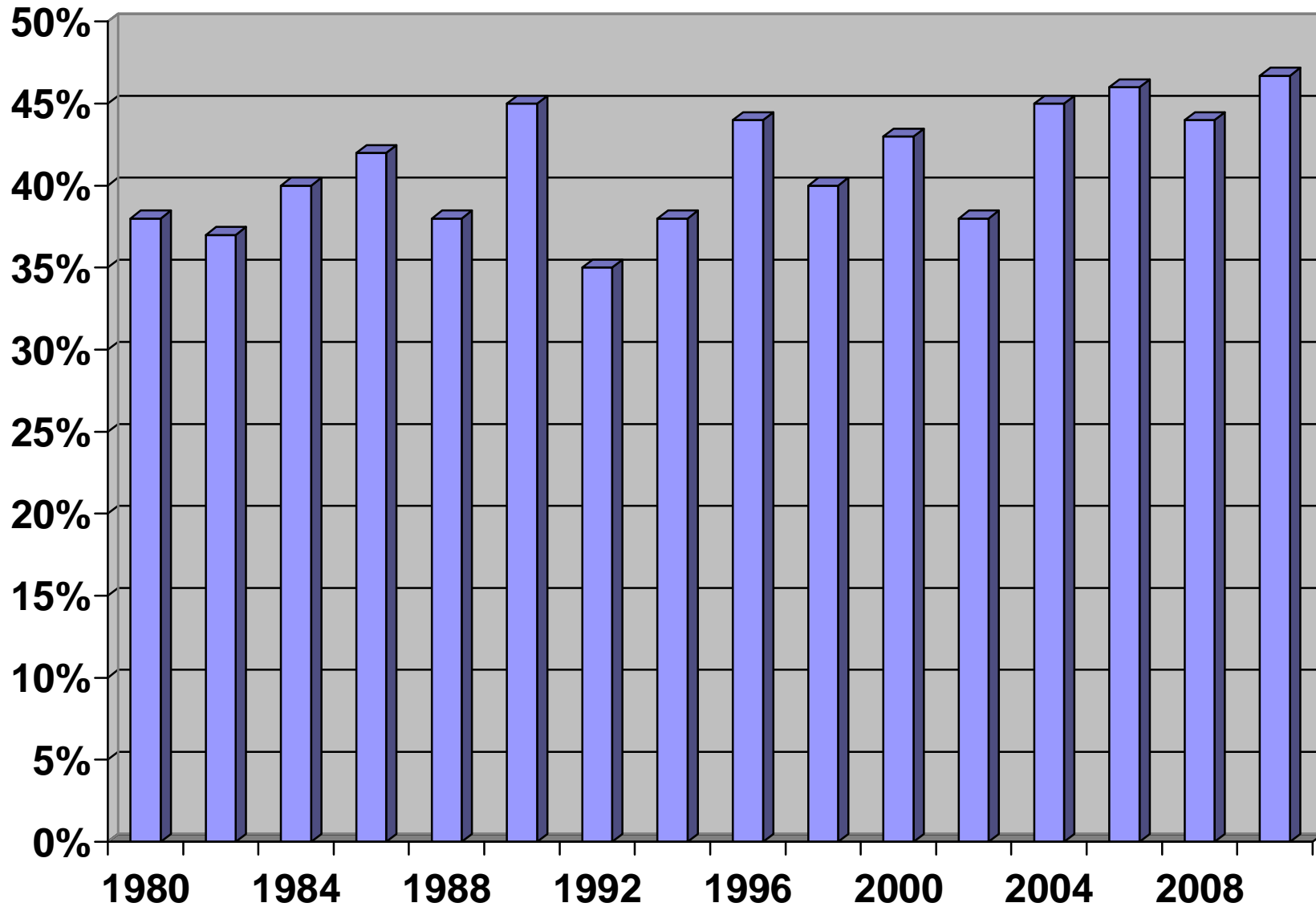
<b>Characteristics</b>	<b>1980</b>	<b>1982</b>	<b>1984</b>	<b>1986</b>	<b>1988</b>	<b>1990</b>	<b>1992</b>	<b>1994</b>	<b>1996</b>	<b>1998</b>	<b>2000</b>	<b>2002</b>	<b>2004</b>	<b>2006</b>	<b>2008</b>	<b>2010</b>
Average Age	38.6	39.2	41.2	41.3	43.0	42.5	43.6	43.0	45.5	44.9	40.2	39.9	43.2	43.3	44	49.1
Sex: Male	20%	20%	15%	18%	16%	15%	17%	16%	14%	15%	20%	20%	18%	22%	22%	20.4%
Female	80%	80%	85%	82%	84%	85%	83%	84%	86%	85%	80%	80%	82%	78%	78%	78.9%
Married	77%	75%	75%	77%	73%	74%	73%	73%	76%	73%	60%	72%	71%	78%	67%	61.6%
Spouse Works	70%	70%	66%	72%	67%	70%	73%	68%	76%	72%	59%	70%	73%	74%	59%	53.2%
Degree: Bachelor	64%	63%	55%	50%	53%	53%	60%	57%	56%	58%	69%	74%	58%	67%	63%	52%
Master	36%	37%	44%	49%	47%	47%	39%	42%	43%	41%	30%	26%	39%	33%	37%	43.8%
	*	*	*	*	*	*	*	*	*	*	*	*	*	*	*	1.9%
Major Breadwinner	40%	40%	40%	39%	43%	41%	46%	42%	42%	40%	51%	43%	48%	41%	56%	58.6%
Districts: Urban	41%	43%	43%	46%	38%	42%	41%	40%	40%	35%	45%	36%	48%	41%	44%	51%
Suburban	33%	37%	39%	37%	40%	40%	37%	41%	39%	44%	41%	45%	41%	48%	50%	38%
Rural	27%	20%	18%	17%	22%	18%	22%	19%	21%	21%	14%	19%	11%	11%	6%	9.7%
Grade Taught: K - 5	51%	50%	46%	52%	52%	51%	53%	47%	50%	54%	47%	48%	42%	47%	41%	35.9%
6 - 8	20%	20%	24%	23%	23%	25%	27%	29%	21%	22%	26%	21%	24%	22%	21%	24.9%
9 - 12	29%	30%	30%	26%	25%	24%	21%	24%	29%	24%	27%	31%	34%	31%	38%	37.4%
Years Experience	11.8	12.1	13.7	14.3	15.4	14.9	14.4	14.8	16.7	16.2	10.0	8.5	13.4	12.4	13.9	17.7
Average Salary	\$14,113	\$17,351	\$20,259	\$24,601	\$26,161	\$26,838	\$28,444	\$30,395	\$33,134	\$34,572	\$35,178	\$36,367	\$41,396	\$42,654	\$47,545	\$50,01
Consider Leaving	38%	37%	40%	42%	38%	45%	35%	38%	44%	40%	43%	38%	45%	46%	44%	46.7%
Quality of Teaching Better	*	*	*	*	37%	39%	43%	43%	39%	38%	39%	39%	28%	30%	32%	28.8%
Expenses Out-Of-Pocket per year	*	*	*	*	*	*	*	*	*	*	*	\$477	\$500	\$552	\$719	\$564
Average Pay for Insurance per month	*	*	*	*	*	\$108	\$144	\$150	\$126	\$144	\$120	\$147	\$149	\$238	\$243	\$222
School Hours Outside Classroom per week	*	*	*	*	*	*	*	*	12.1	13.3	13.8	13.2	13.8	12.4	13.4	15
Adequate time to Prepare	*	*	*	*	*	*	*	*	41%	36%	37%	39%	31%	31%	32%	32.1%
Worst Problem: Discipline	*	*	*	*	*	*	*	*	*	51%	57%	60%	58%	53%	55%	57.7%
Paperwork	*	*	*	*	*	*	*	*	*	35%	39%	38%	34%	39%	37%	22.3%
One Test for Promotion	*	*	*	*	*	*	*	*	*	*	*	10%	4%	7%	4%	6.3%
Extra Jobs in Summer	30%	36%	34%	31%	29%	32%	30%	33%	36%	35%	42%	39%	45%	42%	34%	56.4%
Summer Earnings	\$1,252	\$2,076	\$2,205	\$1,891	\$2,480	\$2,087	\$2,221	\$2,391	\$3,035	\$2,526	\$2,527	\$2,632	\$2,780	\$2,712	\$3,341	\$1366
Moonlight during school year	22%	29%	26%	23%	20%	21%	22%	23%	30%	34%	28%	26%	35%	33%	28%	40.8%
Moonlight Earnings	\$2,799	\$3,189	\$3,615	\$3,522	\$4,627	\$4,329	\$3,552	\$3,533	\$4,504	\$3,340	\$4,720	\$3,250	\$4,705	\$4,952	\$8,288	\$5311
Moonlight Hours Weekly	13.6	11.9	14.4	12.8	10.4	11.6	11.1	12.0	10.8	11.5	11.6	11.4	9.9	11.0	11.5	15.2
Moonlight Detrimental	64%	69%	70%	50%	66%	61%	65%	73%	63%	63%	78%	72%	76%	67%	71%	68.6%
Would Quit Moonlighting if Paid More	75%	75%	82%	61%	78%	73%	72%	78%	64%	77%	85%	82%	84%	82%	88%	63.2%
Raise to Quit Moonlighting	\$3,399	\$4,750	\$5,000	\$3,921	\$4,914	\$4,891	\$5,167	\$5,597	\$5,893	\$6,295	\$7,604	\$5,877	\$7,318	\$6,811	\$8,970	\$8534

**Table 2: Survey of Texas Teachers 2010 Results**

Note: Responses in percentages are a “YES” answer.

State Survey by: Dr. Daphne Johnson, Dr. Sam Sullivan, Dr. Marilyn Rice, Dr. Bob Maninger, and Dr. David Henderson (Sam Houston State University)

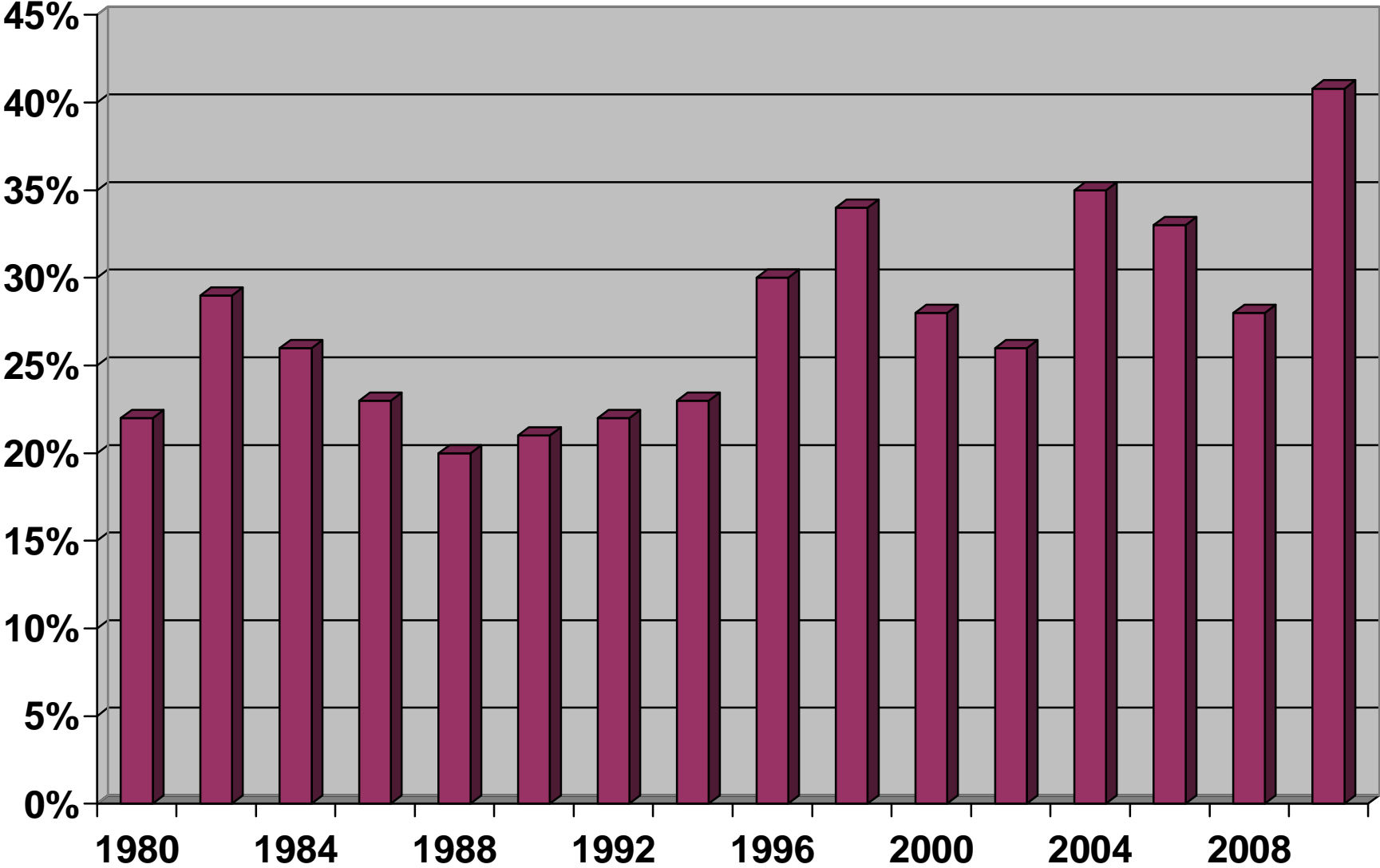
## Teachers Who Consider Leaving the Profession



Note: Responses in percentages are a "YES" answer.

State Survey by: Dr. Daphne Johnson, Dr. Sam Sullivan, Dr. Marilyn Rice, Dr. Bob Maninger, and Dr. David Henderson (Sam Houston State University)

# Teachers Who Moonlight



Note: Responses in percentages are a "YES" answer.  
State Survey by: Dr. Daphne Johnson, Dr. Sam Sullivan, Dr. Marilyn Rice, Dr. Bob Maninger, and Dr. David Henderson (Sam Houston State University)